



# MONTHLY MEMBERSHIP PROGRESS REPORT

District 5M 13

Results as of: 10/31/2017

GMT: GORDON ZIEGLER

LOCATION MANITOBA

GMT CA

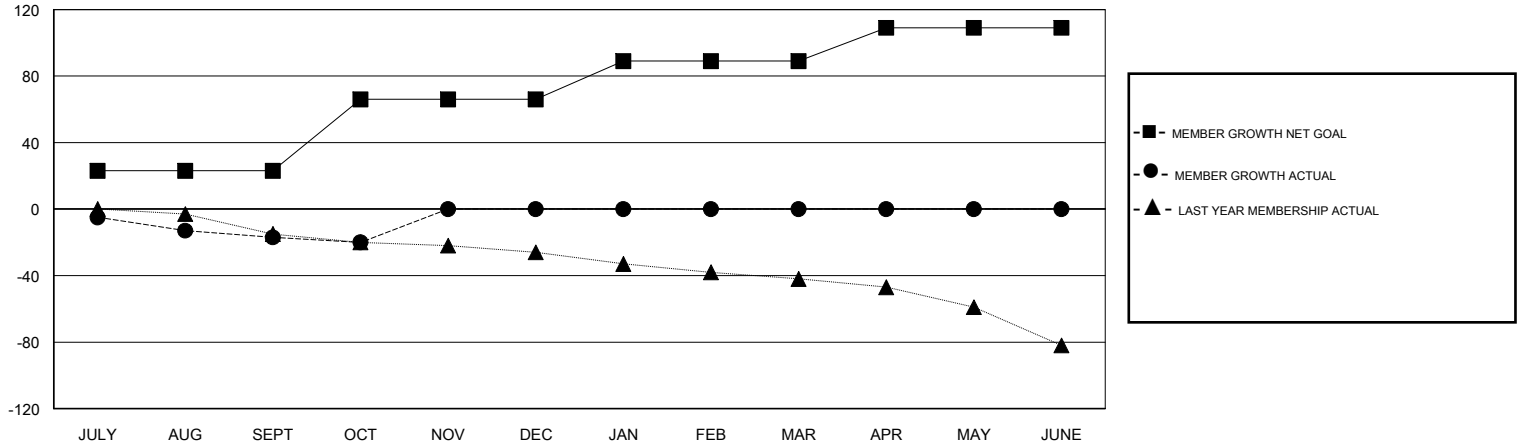
Clubs			
RESULTS FOR 2017-2018			
QUARTER	NEW CLUB GOAL	NEW CLUBS	DROPPED CLUBS
JULY/AUG/SEPT	0	0	1
OCT/NOV/DEC	1	0	0
JAN/FEB/MAR	0	0	0
APR/MAY/JUNE	0	0	0

Members			
RESULTS FOR 2017-2018			
QUARTER	MEMBER GROWTH NET GOAL	MEMBER GROWTH ACTUAL	DROPPED MEMBERS ACTUAL (including transfers)
JULY/AUG/SEPT	23	2	17
OCT/NOV/DEC	43	6	9
JAN/FEB/MAR	23	0	0
APR/MAY/JUNE	20	0	0

GOALS AND ACTUAL NEW CLUBS CUMULATIVE



GOALS AND ACTUAL MEMBERS CUMULATIVE



DROPPED CLUBS: 1	4 CLUBS OF 54 ADDED 1 OR MORE NEW MEMBERS	<u>GENDER DISTRIBUTION</u>	
DROPPED MEMBERS		MALE 819 (77.05%)	FEMALE 244 (22.95%)
DECEASED 2	<a href="#">CLICK HERE FOR CUMULATIVE MEMBERSHIP DATA</a>	Women Percentage Fiscal Year Goal: 25%	
CLUB CANCELLED 0		TOTAL FAMILY UNIT MEMBERS 159	
OTHER 24		FAMILY MEMBERS PAYING HALF DUES 80	
TOTAL 26			